

Unstained PAGE Protein Ladder (12-122 kDa)

SKU: TP790012 500ul

LOT:

Storage: stable at 4°C for up to 1 week.

For long term storage, store at -20°C. Avoid repeated freeze-thaw cycles.



Description

Unstained PAGE Protein Ladder is a mixture of 9 recombinant, highly purified proteins with apparent molecular weights of 12 kDa to 122 kDa.

The 67 kDa band is BSA. The 30 kDa band is Myc-Flag-GST tag protein which can be detected on Western Blot using anti-Flag antibody and anti-GST antibody. And the rest bands are His-tag fusion proteins which enable direct detection on Western Blot using anti-His antibody.

The ladder is supplied in gel loading buffer and is ready-to-use: no heating, further dilution or addition of a reducing agent is required.

Contents

Concentration: approximately 0.6 mg/ml of all proteins.
Storage Buffer: 62.5 mM Tris-HCl, 1 mM EDTA, 2% SDS, 5 mM DTT, 30 mM NaCl, 0.06% Bromophenol Blue and 15% Glycerol, pH 7.0.

Applications

Approximate sizing of proteins on SDS-polyacrylamide gels and Western Blot.

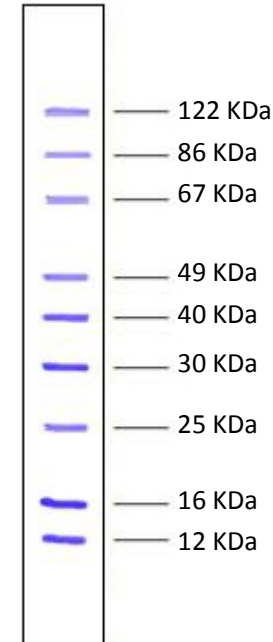
Unstained PAGE Protein Ladder (12-122 kDa)

Instruction for Use

1. Thaw the ladder at room temperature for a few minutes to dissolve precipitated solids.
2. Mix gently, but thoroughly, to ensure the solution is homogeneous.
3. Load the following volumes of the ladder on an SDS-polyacrylamide gel.
 - Recommended Load: 2~4 μ l
 - Loading volumes are intended for use in gels with a thickness of 1.0 mm. For thicker gels, the recommended loading volume should be increased.
 - Use 2 μ l for Western Blot.
4. After the run is complete, stain the gel as desired.

Quality Control

3 μ l of Page Protein Ladder resolves 9 bands of equal intensities in 8-20% SDS-PAGE (Tris-glycine buffer).



8-20% Tris-glycine SDS-PAGE

This product is to be used for laboratory only. Not for diagnostic or therapeutic use.