

# Multiple-Choice™ Northern Blots

## OVERVIEW

Identification of tissues that express a gene of interest is an essential first step for functional analysis. While gene expression panels are a highly sensitive and time-efficient system to measure specific transcript accumulation, they are only semi-quantitative and do not provide information about the size of the transcript. Though often laborious, Northern blotting enables the determination of sites of expression and provides information about transcript size, RNA quantification, cross-hybridization data, and alternate RNA splicing.

## PRODUCT FORMAT AND QUALITY CONTROL

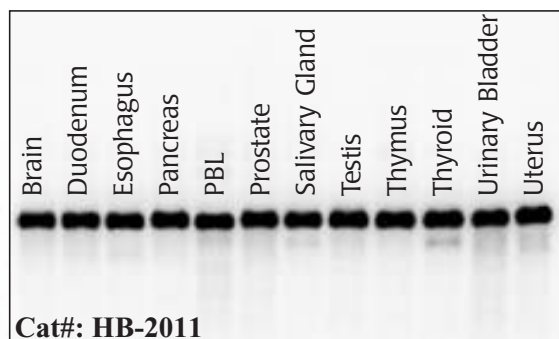
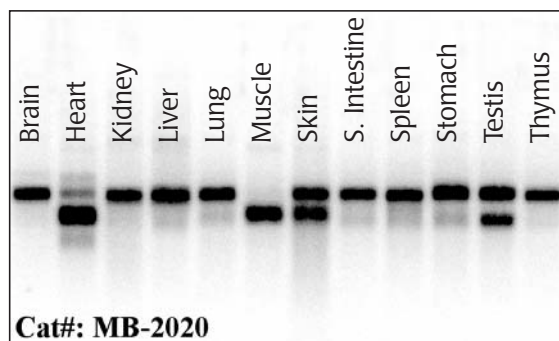
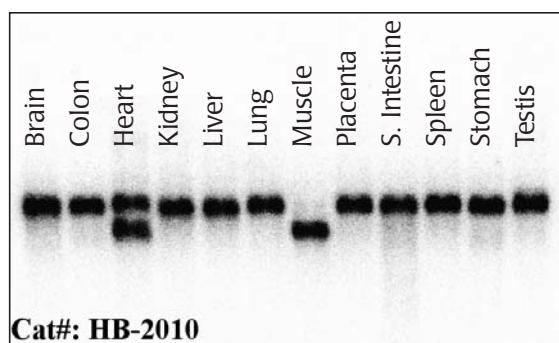
The Multiple-Choice™ Northern Blot is a charged nylon membrane to which total or poly A+ messenger RNA from a variety of tissues has been transferred. Each lane contains approximately 2ug of poly A+ or 20ug of total RNA. In order to provide product of the highest quality, all RNAs used in the production of these blots are probed with a human  $\beta$ -actin cDNA probe to confirm intactness. Equal loading of polyA+ RNAs is ensured by normalization of the  $\beta$ -actin signal on polyA+ RNA Northern Blots. For total RNA Northern Blots, the amount of RNA in each lane is adjusted so that intensities of ribosomal bands are equal.

## KIT COMPONENTS

- One polyA+ or total RNA Northern blot sealed in a plastic pouch
- One vial of human  $\beta$ -actin cDNA (10 ng/ul)
- Two vials of 10ml ULTRAhyb™ buffer
- Application Guide

## PRODUCT APPLICATION

Multiple-Choice Northern Blots are extremely useful in determining the expression level of a specific gene in a variety of tissues. Results are achieved without having to obtain and subsequently isolate messenger RNA from various tissues. Size of the messenger RNA transcripts is determined using the standard RNA markers on the blot as references.



# Multiple-Choice™ Northern Blots

## ORDERING INFORMATION & PRICING

MULTIPLE-CHOICE FIRST STANDARD cDNA	TISSUES AVAILABLE	CATALOG NUMBER
Human 12 major tissue polyA+ blot	Brain, Colon, Heart, Kidney, Liver, Lung, Muscle, Placenta, Small Intestine, Spleen, Stomach, Testis	HB-2010
Human 12 major tissue polyA+ blot	Brain, Duodenum, Esophagus, Pancreas, PBL, Prostate, Salivary Gland, Testis, Thymus, Thyroid, Urinary Bladder, Uterus	HB-2011
Human 6 minor tissue polyA+ blot	Adrenal Gland, Ovary, Pancreas, Salivary Gland, Skin, Uterus	HB-1102
Mouse 12 major tissue poly A+ blot	Brain, Heart, Kidney, Liver, Lung, Muscle, Skin, Small Intestine, Spleen, Stomach, Testis, Thymus	MB-2020
Rat 12 major tissue polyA+ blot	Brain, Heart, Kidney, Liver, Lung, Muscle, Skin, Small Intestine, Spleen, Stomach, Testis, Thymus	RB-2030
Rat 12 brain parts total RNA blot	Frontal Cortex, Posterior Cortex, Entorhinal Cortex, Hippocampus, Olfactory Bulb, Striatum, Thalamus, Cerebellum, Midbrain, Pons, Medulla, Spinal Cord	SB-2040

**For pricing information call Customer Service at 1-888-267-4436 ext. 1.  
To Order call 888-267-4436 (M-F, 9AM-5PM EST) or fax your order to 1-301-340-9254 (24 hours)  
For Technical Support call 301-340-3188 ext. 2 or visit the OriGene website at [www.origene.com](http://www.origene.com)**

## PRODUCT DELIVERY AND STORAGE

Multiple-Choice Northern Blot Kits are shipped at room temperature. Product storage at -20°C upon arrival is recommended.



**TrueClone™ Collection Blue-Ribbon™ Reagents Rapid-Screen™ Tools**

6 Taft Court, Suite 300 Rockville, MD 20850 • Phone: 888-267-4436 Fax: 301-340-9254

[www.origene.com](http://www.origene.com)